



FW21



SHOES & GARMENTS

monitorbrand.com

TABLE OF CONTENTS

MONITORBRAND - STORY	03
SYMBOLS & SAFETY CLASSIFICATION	12

MONITOR SHOES	16
MONITOR GARMENTS	56

PARTNER BRANDS 70

BIRKENSTOCK	72
SALOMON	80
UNDER ARMOUR	90
SALMING	96
BJÖRN BORG	98
PUMA	104
REEBOK	108
ACCESSORIES	110

CONTACT DETAILS	112
SALES DISTRICTS	115



BÅSTAD GRUPPEN AB

BOX 1031, SE-262 21 Ängelholm, Sweden

OFFICE / CUSTOMER SUPPORT

Tel. +46 431-732 00, Fax +46 431-730 95

info@bastadgruppen.com

STORY

Not since our hike in the Monitor Mountain Range in Nevada, the day when we got the idea for our footwear. Even back then we had a different mindset. We realized that it was possible to create a new generation of safety footwear based on technical hiking boots. It was the basis for our brand, which we named after the mountain range where we got our inspiration. Monitor Shoes had come into existence. The ability to change mindset. To see what others are not seeing, to break with convention and forge our own path – doing things our own way is the essence of our brand.



DEVELOPMENT

When developing new products the focus is always on safety and the needs of the user. Considerable experience and an in-depth knowledge of the anatomy of the foot, combined with the latest footwear manufacturing technology, is what forms the basis for the safety footwear of the future.

Carefully selected materials, solid craftsmanship and an innovative mindset ensure technically advanced footwear with features such as low weight, good breathability and shock absorption. Maximum performance and comfort eight hours a day, and longer. Design is another area in which we differ from the rest. We never compromise on quality or functionality. But at the same time we put just as much emphasis into creating a unique visual identity, design and style, which ensures that our products stand out from the crowd. This is probably why Monitor has in a short time become one of Scandinavia's leading manufacturers of safety footwear and clothes. Created for everyone who, just like us, cares about what they have on their feet, and dares to forge their own path.



THE ART OF BEING ONE STEP AHEAD

Innovation without a solid foundation of knowledge is not possible. At Monitor, we always strive to be at the forefront of development. Curiosity and being open to change are two of the tools that we employ. But we also need to be mindful of the needs of our customers, market changes and new trends. We never rest on our laurels and employ smart collaboration and knowledge sharing to retain our position at the forefront of safety footwear and clothes development. This is also the reason why we challenge the norms and forge our own path. If you're like us – then you'll understand exactly how we think.





SAFE AND SMART DESIGN

Our motto Safe & Smart sums up exactly what our design work is all about. That safety always comes first. This is something we never compromise on. Each shoe must have the highest possible rating in its respective protection class. But we attach equal importance to the design and styling of our footwear and clothes. In this work we are inspired by our environment and trends, as well as by new technology and new materials. This provides us with plenty of new opportunities for both aesthetic and functional designs. Our own unique style that we are very proud of.





CONSTRUCTED GARMENTS



MONITOR SWEAT ONE





MONITOR
ECO GREEN



SAFE AND SMART



LIMITED EDITION





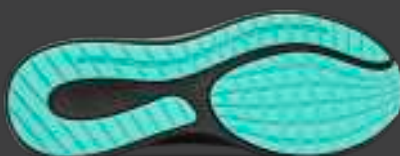
NEW

MONITOR PSRT LIMITED EDITION

Art: **10045301**

Sizes: **35-47**

Color: **Black**



SAFETY CLASSIFICATION

	Occupational footwear EN ISO 20347:2012				Safety footwear EN ISO 20345:2011						
CATEGORY PROPERTIES	OB	01	02	04	SB	S1	S1P	S2	S3	S4	S5
Non-slip *3 (SRA / SRB / SRC)	▲▲	▲▲	▲▲	▲▲	▲▲	▲▲	▲▲	▲▲	▲▲	▲▲	▲▲
Toecap					▲▲	▲▲	▲▲	▲▲	▲▲	▲▲	▲▲
Puncture-resistant sole (P)							▲▲		▲▲		▲▲
Closed heel area		▲▲	▲▲			▲▲	▲▲	▲▲	▲▲		
Fuel resistance of sole (FO)					▲▲	▲▲	▲▲	▲▲	▲▲	▲▲	▲▲
Antistatic properties (A)		▲▲	▲▲	▲▲	▲▲	▲▲	▲▲	▲▲	▲▲	▲▲	▲▲
Energy absorption in the heel area (E)		▲▲	▲▲	▲▲	▲▲	▲▲	▲▲	▲▲	▲▲	▲▲	▲▲
Water-resistance			▲▲*1	▲▲*2				▲▲*1	▲▲*1	▲▲*2	▲▲*2
Profiled sole				▲▲					▲▲		▲▲

*1 Min. 80 min no water penetration

*2 No water penetration

*3 Can be SRA, SRB or SRC

Minimum requirement for certification of occupational and safety footwear is the slip resistance provided according to SRA, SRB or SRC.

SRA: Slip resistance on ceramic tiles and cleaning agents.

SRB: Slip resistance on steel floor and glycerin.

SRC: (SRA + SRB): Slip resistance on ceramic tiles, cleaning agents, steel floor and glycerin.

HRQ: Heat-resistant outsole that can withstand up to 300 °C for one minute, which can help prevent injury



CONSTRUCTED GARMENTS



SIZES	C44	C46	C48	C50	C52	C54	C56	C58	C60
CLASSIC MEASURING LIST	76.00	80.00	84.00	88.00	92.00	97.00	102.00	108.00	114.00
CLASSIC MEASURING LIST (LOOSE FIT)	80.00	84.00	88.00	92.00	96.00	101.00	106.00	112.00	118.00

MONITOR SIZES	XS 44-46	S 46-48	M 48-50	L 50-52	XL 52-54	XXL 56-58	XXXL 60-62
WAIST MONITOR RELAXED	70.00	76.00	82.00	88.00	94.00	100.00	106.00
WAIST MONITOR STRETCHED	82.00	88.00	94.00	100.00	106.00	112.00	118.00



PROPERTIES



LIGHTWEIGHT

30% lighter than nylon and polyester. 45% lighter than aramid

STRONG

15x stronger than steel (weight per weight ratio)

DURABILITY

UV and water-resistant
Hard-wearing



SS2

Monitor Safe & Smart SS2 insoles combine cushioning with comfort. The sole is made of dual-density polyurethane with extra shock absorption panels under the heel and forefoot. The middle portion of the sole is built up and provides extra arch support. The upper part is covered with airy fabric.



OutDry®

OutDry® is a patented waterproofing technology that truly revolutionizes the current standard membrane construction. Only OutDry® uses a waterproof and breathable membrane applied directly to the shoe upper to keep water out and maintain constant breathability.



Boa®

Boa® is a quick, simple and durable lace system for personalized comfort and uniform closure without pressure points.



SS2.0

Monitor Safe & Smart SS2.0 Insole with dual shock absorption zones in PU and distinct arch support. ESD-approved.



THINSULATE®

Heat-insulating Thinsulate™ fibers that are breathable and keep your feet warm.



MONITEX®

Monitex is a high-tech material designed to be waterproof and windproof. Monitex ensures good breathability to keep your feet dry and comfortable.



SAFE AND SMART CUSHION CONTROL

Insole with memory foam that absorbs shocks, is breathable and molds to the foot, while also absorbing moisture and odor.



VIBRAM

The brand was founded by Whiteale Bramani in 1907 and specializes in developing technical soles that are adapted to the application.



STEEL TOECAP

Protects toes from falling objects and compression.



ALUMINUM TOECAP

Protects toes from falling objects and compression. Half the weight of steel.



COMPOSITE TOECAP

Protects toes from falling objects and compression. Lightweight material and no metal to conduct heat or cold.



WATERPROOF

The shoe has a waterproof membrane. Follow shoe care instructions.



WATER-REPELLENT

Water-repellent leather/textile.



WINTER LINING

These shoes have a winter lining to keep feet warm. The choice of sock is also important.



PENETRATION PROTECTION (STEEL)

Protects against penetration by nails and other objects.



SOFT PENETRATION PROTECTION

APT protection for a lighter, more flexible shoe.



PANTZAR APT

Penetration protection is provided by Monitor's new Pantzar APT, which is extremely light, flexible and safe.



MULTIPLE WIDTHS

Our safety footwear is available in different width fittings. Individual fit for increased comfort and safety.

Monitor's Q fitting is adapted for women and designed to provide optimum comfort for the female foot.



HYPERTEX (PU Tek technology)

Hypertex employs new technology with threads that have ultra-high resistance to abrasion, woven directly into high-resistance fabric to produce textiles with the ultimate mechanical performance!



X LIGHT

Extra lightweight safety footwear that provides a sporty and comfortable feeling when walking.



ESD-GODKÄND

The sole dissipates static electricity in accordance with ESD requirements. 0-35 MΩ



LADY

Specially selected safety and occupational footwear for women. These shoes have a more feminine fit – for the right size and width.



WED (WIRE ELECTRICITY DISCHARGE)

Strip with conductive carbon filament. Upon contact with the foot, this feature guarantees antistatic shoes over time, with all types of hygienic insole.



MONITOR X4

The X-max material in the sole is antistatic, shock-absorbing and has superior breathability, while the FlyFit fabric next to the foot keeps the foot cool.



NON-METAL

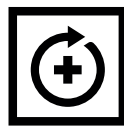
The shoe is 100% metal-free.

BOA®

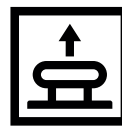
**TURN TO ACHIEVE
THE PERFECT FIT
EFFORTLESSLY.**



PUSH
IN TO
ENGAGE



TURN
TO
TIGHTEN



PULL UP
FOR QUICK
RELEASE



BOA®



AGILITY AND SPEED

The BOA® Fit System enables faster, more powerful directional changes through a seamless connection between equipment and body.

POWER AND PRECISION

Power without compromising precision, the BOA® Fit System delivers more explosive action and unparalleled accuracy.

ENDURANCE AND HEALTH

Go further, faster and stronger. The BOA® Fit System saves energy by improving circulation and efficiency.

DURABILITY AND QUALITY

Engineered with high-quality, durable materials and rigorously field tested, the BOA® Fit System is guaranteed to perform in any environment.



18



FACTORY

26



GRAND PRIX



38
HEAVY DUTY



**SPORT
WORK**

44

48

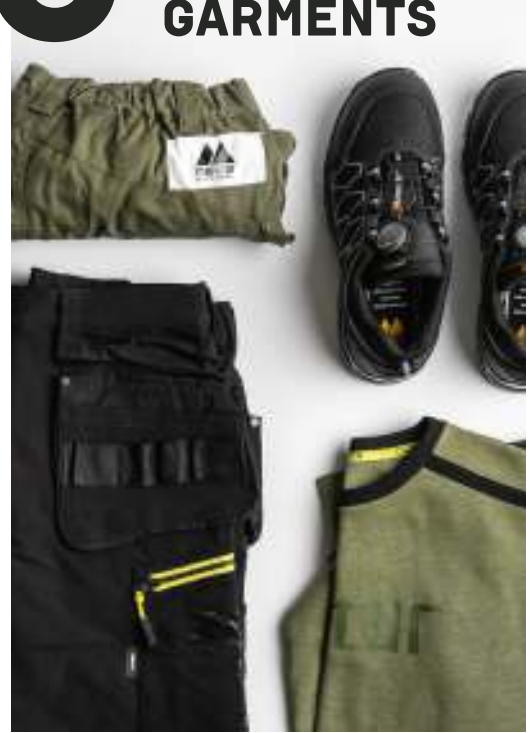


52



56

CONSTRUCTED GARMENTS



FACTORY

- 20 M-REBOUND
- 22 M-REBOUND LADY
- 24 MOMENTUM

GRAND PRIX

- 28 BOUNCE
- 29 V-POWER
- 30 DYNAMIC
- 32 FEATHER LADY
- 34 SIGMA
- 35 ALPHA

HEAVY DUTY

- 40 HEAVY DUTY

SPORTWORK

- 46 EN ISO 20347:2012

FLEX

- 50 FLEX WORK
- 51 FLEX SAFETY

365

- 54 365

GARMENTS

- 56 CONSTRUCTED GARMENTS

ACCESSORIES

- 66 SOCKS
- 68 INSOLES

ACCESSORIES



68

MONITOR FACTORY



M-REBOUND

M-REBOUND LADY

MOMENTUM



ESD-rated safety footwear specially developed for industrial flooring and construction. Its focus is on ergonomic comfort, safety and functionality. These styles are equipped with fantastic outsoles with excellent grip, giving the user a controlled and safe working day.





M-REBOUND



MONITOR STONE

EN ISO 20345:2011 S1P SRC ESD

Art: 10055001 Sizes: 36-48 Color: Black

FIT	Wide
TOECAP	Composite
PROTECTION	Soft protection in APT
UPPER	Textile
OUTSOLE	Rubber with M48R midsole
INSOLE	Monitor SS2.0
WATERPROOF	No
SUITABLE FOR	Warehouse and industry
LACING	BOA® Fit System



MONITOR PENTAGON

EN ISO 20345:2011 S3 SRC ESD

Art: 10055301 Sizes: 36-48 Color: Black

FIT	Wide
TOECAP	Composite
PROTECTION	Soft protection in APT
UPPER	Hypertex
OUTSOLE	Rubber with M48R rebound midsole
INSOLE	Monitor SS2.0
WATERPROOF	No
SUITABLE FOR	Industry, construction and warehouse
LACING	BOA® Fit System



MONITOR REBEL

EN ISO 20345:2011 S3 SRC ESD

Art: 10055501 Sizes: 36-48 Color: Black

FIT	Wide
TOECAP	Composite
PROTECTION	Soft protection in APT
UPPER	Textile and TPU
OUTSOLE	Rubber with M48R midsole
INSOLE	Monitor SS2.0
WATERPROOF	No
SUITABLE FOR	Industry, construction and warehouse



MONITOR COMBAT

EN ISO 20345:2011 S3 SRC ESD

Art: 10055401 Sizes: 36-48 Color: Black

FIT	Wide
TOECAP	Composite
PROTECTION	Soft protection in APT
UPPER	Textile and TPU
OUTSOLE	Rubber with M48R midsole
INSOLE	Monitor SS2.0
WATERPROOF	No
SUITABLE FOR	Industry, construction and warehouse
LACING	BOA® Fit System



M-REBOUND



MONITOR ICONIC

EN ISO 20345:2011 S1P SRC ESD

Art: 10056001 Sizes: 36-48 Color: Black

FIT	Wide
TOECAP	Carbon
PROTECTION	Pantzar APT
UPPER	Dyneema*
OUTSOLE	M48R rebound
INSOLE	Monitor SS2.0
WATERPROOF	No
SUITABLE FOR	Industry, construction and warehouse
LACING	BOA® L12 Fit System



MONITOR SNIPER

EN ISO 20345:2011 S1P SRC ESD

Art: 10055201 Sizes: 36-48 Color: Black

FIT	Wide
TOECAP	Composite
PROTECTION	Soft protection in Pantzar APT
UPPER	Microfiber
OUTSOLE	Rubber with M48R midsole
INSOLE	Monitor SS2.0
WATERPROOF	No
SUITABLE FOR	Warehouse and industry
LACING	BOA® Fit System, Pantzar APT.



NEW

MONITOR MARINE

EN ISO 20345:2011 S3 WR SRC ESD

Art: 10055101 Sizes: 36-48 Color: Black

FIT	Wide
TOECAP	Carbon
PROTECTION	Soft protection in Pantzar APT
UPPER	Hypertex
OUTSOLE	Rubber with M48R midsole
INSOLE	Monitor SS2.0
WATERPROOF	Yes
SUITABLE FOR	Industry, construction and warehouse
LACING	BOA® Fit System



M-REBOUND LADY



NEW

MONITOR JADE

EN ISO 20345:2011 S3 HRO SRC ESD

Art: 10058601 Sizes: 33-42 Color: Black

FIT	Q-lady
TOECAP	Aluminum
PROTECTION	Pantzar APT soft penetration protection
UPPER	Microfiber and textile
OUTSOLE	M-rebound MRR with rubber outsole
INSOLE	Monitor SS2.0
WATERPROOF	No
SUITABLE FOR	Warehouse and industry
LACING	BOA® Fit System



NEW

MONITOR SILVER

EN ISO 20345:2011 S1P HRO SRC ESD

Art: 10058701 Sizes: 33-42 Color: Black

FIT	Q-lady
TOECAP	Aluminum
PROTECTION	Pantzar APT soft penetration protection
UPPER	Microfiber and textile
OUTSOLE	M-rebound MRR with rubber outsole
INSOLE	Monitor SS2.0
WATERPROOF	No
SUITABLE FOR	Warehouse and industry



MONITOR MINT

EN ISO 20345:2011 S1P HRO SRC ESD

Art: 10058501 Sizes: 33-42 Color: Black

FIT	Q-lady
TOECAP	Aluminum
PROTECTION	Pantzar APT soft penetration protection
UPPER	Microfiber and textile
OUTSOLE	M-rebound MRR with rubber outsole
INSOLE	Monitor SS2.0
WATERPROOF	No
SUITABLE FOR	Warehouse and industry
LACING	BOA® Fit System



M-REBOUND LADY



MOMENTUM



MONITOR AERO

EN ISO 20345:2011 S1P SRC ESD

Art: **10071701**

Sizes: **40-48**

Color: **Black**

FIT	Wide
TOECAP	Composite
PROTECTION	Soft protection in APT
UPPER	Leather and mesh
OUTSOLE	Dual-density PU with rugged tread pattern for good grip
INSOLE	Fit-tech for maximum comfort
WATERPROOF	No
SUITABLE FOR	Industry, construction and warehouse
LACING	BOA® Fit System



MOMENTUM



NEW

MONITOR ECO GREEN

EN ISO 20345:2011 S3 HRO HI SRC ESD

Art: **10080804**

Sizes: **36-48**

Color: **Green**

FIT	Wide
TOECAP	Aluminum
PROTECTION	Soft protection in APT
UPPER	Fabric made from recycled PTE plastic
OUTSOLE	Vibram outsole with Monitor Active PU midsole
INSOLE	Recycled polyurethane
WATERPROOF	No
SUITABLE FOR	Warehouse, industry and light construction
LACING	BOA® Fit System



MONITOR

GRAND PRIX



These styles have a sportier design without sacrificing either comfort or safety. Toecap, penetration protection, shock absorption, breathability and extra stability – all part of a product formula that has rapidly made the GRAND PRIX series a real winner.

BOUNCE

V-POWER

DYNAMIC

FEATHER LADY

SIGMA

ALPHA



GRAND PRIX



BOUNCE



MONITOR VENTURE

EN ISO 20345:2011 S1P SRC ESD

Art: 10072801 Sizes: 35-47 Color: Black

FIT	Regular
TOECAP	Composite
PROTECTION	Soft protection in APT
UPPER	Mo-knit textile
OUTSOLE	E50 non-slip rubber sole with EVA midsole
INSOLE	Monitor SS2.0
WATERPROOF	No
SUITABLE FOR	Warehouse and industry



MONITOR MANIA

EN ISO 20345:2011 S3 SRC ESD

Art: 10072901 Sizes: 35-47 Color: Black

FIT	Regular
TOECAP	Composite
PROTECTION	Soft protection in APT
UPPER	Canvas textile and TPU
OUTSOLE	E50 non-slip rubber sole with EVA midsole
INSOLE	Monitor SS2.0
WATERPROOF	No
SUITABLE FOR	Warehouse and industry



V-POWER



MONITOR SHARK

EN ISO 20345:2011 S3 SRC

Art: 10052001

Sizes: 39-47

Color: Black

FIT
TOECAP
PROTECTION
UPPER
OUTSOLE
INSOLE
WATERPROOF
SUITABLE FOR
LACING

Regular
Aluminum
Soft protection in APT
Textile and TPU
Vibram rubber sole and EVA midsole
Monitor SS2.0
No
Industry, construction and warehouse
BOA® Fit System



MONITOR EAGLE

EN ISO 20345:2011 S3 SRC

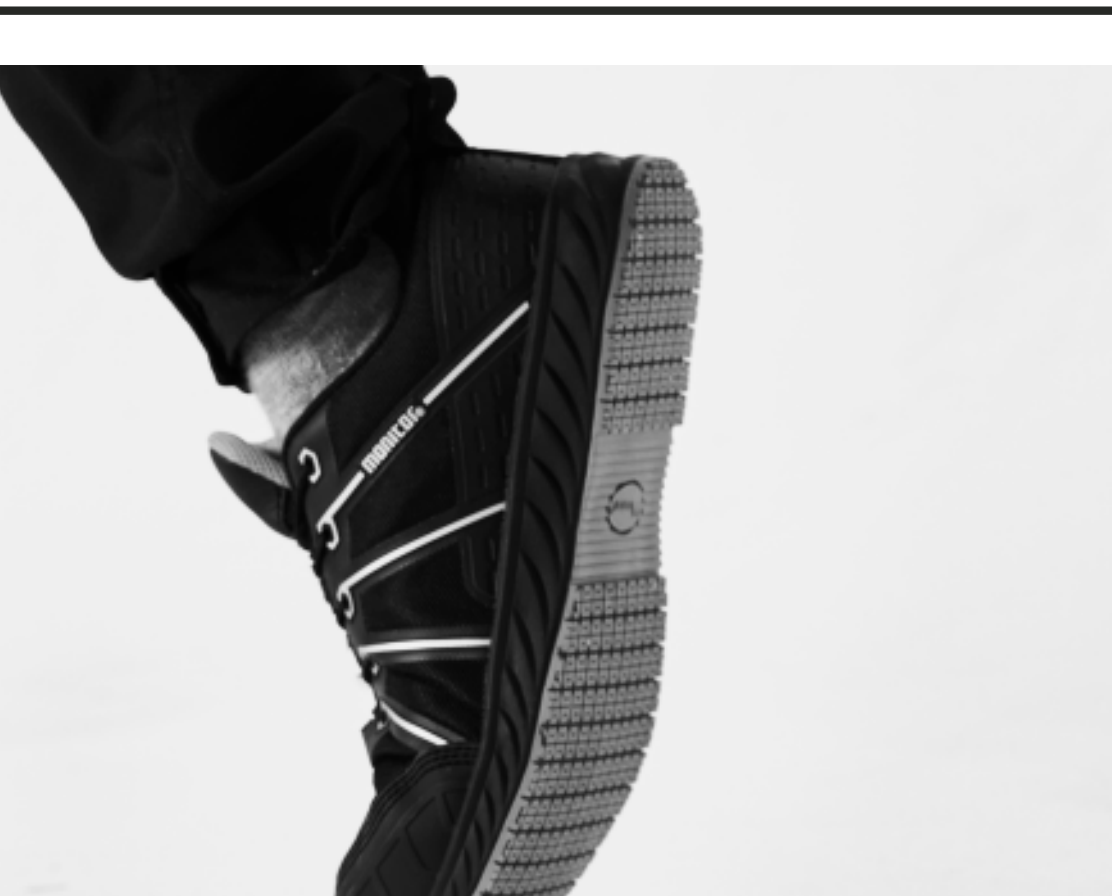
Art: 10052101

Sizes: 39-47

Color: Black

FIT
TOECAP
PROTECTION
UPPER
OUTSOLE
INSOLE
WATERPROOF
SUITABLE FOR

Regular
Aluminum
Soft protection in APT
Textile and TPU
Vibram rubber sole and EVA midsole
Monitor SS2.0
No
Industry, construction and warehouse



GRAND PRIX

DYNAMIC



MONITOR MICRO

EN ISO 20345:2011 S3 SRC

Art: **10063001** Sizes: **35-47** Color: **Black**

FIT	Regular
TOECAP	Composite
PROTECTION	Soft protection in APT
UPPER	Leather
OUTSOLE	Dual-density PU
INSOLE	Monitor SS2.0
WATERPROOF	No
SUITABLE FOR	Industry, transport and warehouse work



MONITOR HYBRID

EN ISO 20345:2011 S3 SRC

Art: **10063101** Sizes: **35-47** Color: **Black**

FIT	Regular
TOECAP	Composite
PROTECTION	Soft protection in APT
UPPER	Leather
OUTSOLE	Dual-density PU
INSOLE	Monitor SS2.0
WATERPROOF	No
SUITABLE FOR	Industry, transport and warehouse work



MONITOR INFERNO

EN ISO 20345:2011 S1P SRC

Art: **10063201** Sizes: **35-47** Color: **Black**

FIT	Regular
TOECAP	Composite
PROTECTION	Soft protection in APT
UPPER	Textile and reflective Camelo
OUTSOLE	Dual-density PU
INSOLE	Monitor SS2.0
WATERPROOF	No
SUITABLE FOR	Warehouse and industry



MONITOR DRAGON

EN ISO 20345:2011 S1P SRC ESD

Art: **10063301** Sizes: **35-47** Color: **Black**

FIT	Regular
TOECAP	Composite
PROTECTION	Soft protection in APT
UPPER	Mo-knit textile
OUTSOLE	Dual-density PU
INSOLE	Monitor SS2.0
WATERPROOF	No
SUITABLE FOR	Industry, transport and warehouse
LACING	BOA® Fit System



DYNAMIC



MONITOR RADAR

EN ISO 20345:2011 S1P SRC ESD

Art: 10063401

Sizes: 35-47

Color: Black

FIT

TOECAP

PROTECTION

UPPER

OUTSOLE

INSOLE

WATERPROOF

SUITABLE FOR

Regular

Composite

Soft protection in APT

Leather

Dual-density PU

Monitor SS2.0

No

Industry, transport and warehouse work



GRAND PRIX

FEATHER LADY



MONITOR NAVAJO

EN ISO 20345:2011 S1P HRO SRC ESD

Art: **10078401** Sizes: **33-42** Color: **Black**

FIT	Q-lady
TOECAP	Aluminum
PROTECTION	Soft protection in APT
UPPER	Seamless microfiber
OUTSOLE	Rubber with EVA midsole
INSOLE	SSCC memory foam
WATERPROOF	No
SUITABLE FOR	Warehouse and industry



MONITOR SPIRIT

EN ISO 20345:2011 S1P HRO SRC ESD

Art: **10078301** Sizes: **33-42** Color: **Black**

FIT	Q-lady
TOECAP	Aluminum
PROTECTION	Soft protection in APT
UPPER	Seamless microfiber
OUTSOLE	Rubber with EVA midsole
INSOLE	Monitor SS2.0
WATERPROOF	No
SUITABLE FOR	Warehouse and industry
LACING	BOA® Fit System



MONITOR FOX

EN ISO 20345:2011 S1P SRC

Art: **10078208** Sizes: **33-42** Color: **Grey / Black**

FIT	Q-lady
TOECAP	Aluminum
PROTECTION	Soft protection in APT
UPPER	Seamless microfiber
OUTSOLE	Rubber with EVA midsole
INSOLE	Monitor SS2.0
WATERPROOF	No
SUITABLE FOR	Warehouse and industry



MONITOR GOLD

EN ISO 20345:2011 S3 SRC ESD

Art: **10078501** Sizes: **33-42** Color: **Black**

FIT	Q-lady
TOECAP	Aluminum
PROTECTION	Soft protection in APT
UPPER	Seamless microfiber
OUTSOLE	Rubber with EVA midsole
INSOLE	Monitor SS2.0
WATERPROOF	No
SUITABLE FOR	Warehouse and industry
LACING	BOA® Fit System



FEATHER LADY



LADY

GRAND PRIX

SIGMA



MONITOR MIG

EN ISO 20345:2011 S3 SRC HRO ESD

Art: 10073601	Sizes: 36-47	Color: Black
FIT	Wide	
TOECAP	Aluminum	
PROTECTION	Soft protection in APT	
UPPER	Ripstop textile and TPU	
OUTSOLE	Rubber with EVA midsole	
INSOLE	Monitor SS2.0	
WATERPROOF	No	
SUITABLE FOR	Industry, transport, construction and warehouse	
LACING	BOA® Fit System	



MONITOR KRYPTO

EN ISO 20345:2011 S3 HRO WR ESD SRC

Art: 10073201	Sizes: 36-47	Color: Black
FIT	Wide	
TOECAP	Aluminum	
PROTECTION	Soft protection in APT	
UPPER	Microfiber, mesh and TPU	
OUTSOLE	Rubber with EVA midsole	
INSOLE	Monitor SS2.0	
WATERPROOF	Monitex membrane	
SUITABLE FOR	Warehouse and industry	
LACING	BOA® Fit System	



MONITOR CHARGED

EN ISO 20345:2011 S3 WR SRC HRO

Art: 10073501	Sizes: 36-47	Color: Black
FIT	Wide	
TOECAP	Aluminum	
PROTECTION	Soft protection in APT	
UPPER	Microfiber	
OUTSOLE	Rubber with EVA midsole	
INSOLE	Monitor SS2.0	
WATERPROOF	Monitex membrane	
SUITABLE FOR	Warehouse, industry and transport	
LACING	BOA® Fit System	



MONITOR CONCORDE

EN ISO 20345:2011 S1P HRO SRC

Art: 10072502	Sizes: 36-47	Color: White
FIT	Wide	
TOECAP	Aluminum	
PROTECTION	Soft protection in APT	
UPPER	Microfiber and mesh	
OUTSOLE	Rubber with EVA midsole	
INSOLE	Monitor SS2.0	
WATERPROOF	No	
SUITABLE FOR	Warehouse, industry and painting	
LACING	BOA® Fit System	



ALPHA



MONITOR ROBOTIC

EN ISO 20345:2011 S1P HRO SRC

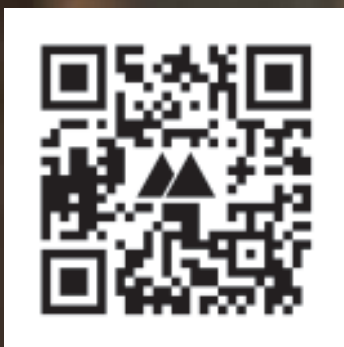
Art: 10072401 Sizes: 36-47 Color: Black

FIT	Wide
TOECAP	Aluminum
PROTECTION	Soft protection in APT
UPPER	Microfiber and mesh
OUTSOLE	Rubber with EVA midsole
INSOLE	Monitor SS2.0
WATERPROOF	No
SUITABLE FOR	Warehouse and industry
LACING	BOA® Fit System



GRAND PRIX

WE ARE MONITOR





**FOLLOW
OUR
JOURNEY**

facebook.com/**monitorbrand**
instagram.com/**monitorbrand**

#monitorbrand

MONITOR

HEAVY DUTY

The toughest collection in our range. This is about durable shoes and boots that can withstand most things, both indoors and out. The shoes are available as both windproof and water-proof and have breathable properties that keep your feet dry at all times.





HEAVY DUTY



MONITOR MADISON

EN ISO 20345:2011 S3 SRC ESD

Art: **10060101** Sizes: **36-47** Color: **Black**

FIT	Wide
TOECAP	Steel
PROTECTION	Steel
UPPER	Microfiber
OUTSOLE	Dual-density PU
INSOLE	Monitor SS2.0
WATERPROOF	No
SUITABLE FOR	Industry, construction and warehouse

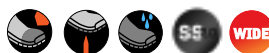


MONITOR DENVER

EN ISO 20345:2011 S3 SRC

Art: **10060301** Sizes: **36-47** Color: **Black**

FIT	Wide
TOECAP	Steel
PROTECTION	Steel
UPPER	PU-coated leather
OUTSOLE	Dual-density PU
INSOLE	Monitor SS2.0
WATERPROOF	No
SUITABLE FOR	Building, construction and heavy-duty work



MONITOR JACKSON

EN ISO 20345:2011 S3 SRC

Art: **10060801** Sizes: **36-47** Color: **Black**

FIT	Wide
TOECAP	Composite
PROTECTION	Soft protection in APT
UPPER	PU-coated leather
OUTSOLE	Dual-density PU
INSOLE	Monitor SS2
WATERPROOF	No
SUITABLE FOR	Building, construction and heavy-duty work

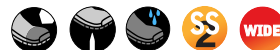


MONITOR DALLAS

EN ISO 20345:2011 S3 SRC

Art: **10060901** Sizes: **36-47** Color: **Black**

FIT	Wide
TOECAP	Composite
PROTECTION	Soft protection in APT
UPPER	PU-coated leather
OUTSOLE	Dual-density PU
INSOLE	Monitor SS2
WATERPROOF	No
SUITABLE FOR	Building, construction and heavy-duty work



HEAVY DUTY



MONITOR ASSAULT

EN ISO 20345:2011 S3 WR SRC

Art: 10080601 Sizes: 36-48 Color: Black

FIT	Wide
TOECAP	Composite
PROTECTION	Soft protection in APT
UPPER	Leather
OUTSOLE	Vibram rubber sole
INSOLE	Monitor X4
WATERPROOF	Yes, with Monitex membrane
SUITABLE FOR	Building, construction and heavy-duty work
LACING	BOA® Fit System



MONITOR WEAPON

EN ISO 20345:2011 S3 WR SRC

Art: 10080701 Sizes: 36-48 Color: Black

FIT	Wide
TOECAP	Composite
PROTECTION	Soft protection in APT
UPPER	Leather
OUTSOLE	Vibram rubber sole
INSOLE	Monitor X4
WATERPROOF	Yes, with Monitex membrane
SUITABLE FOR	Building, construction and heavy-duty work
LACING	BOA® Fit System



MONITOR COMMAND

EN ISO 20345:2011 S3 HRO SRC

Art: 10079301 Sizes: 36-47 Color: Black

FIT	Extra wide
TOECAP	Composite
PROTECTION	Soft protection in APT
UPPER	Leather
OUTSOLE	Rubber with PU midsole
INSOLE	Monitor SS2
WATERPROOF	No
SUITABLE FOR	Building, construction and heavy-duty work



HEAVY DUTY



MONITOR RÄTTVIK

EN ISO 200345:2011 S5 SRC

Art: 10030401

Sizes: 36-48

Color: Black

FIT
TOECAP
PROTECTION
UPPER
OUTSOLE
WATERPROOF
SUITABLE FOR

Wide
Steel
Soft protection in APT
PVC
Nitrile rubber
Yes
Building, construction and heavy-duty work



MONITOR HURRICANE

EN ISO 20345:2011 S3 HRO WR SRC

Art: 10077401

Sizes: 36-48

Color: Black

FIT
TOECAP
PROTECTION
UPPER
OUTSOLE
INSOLE
WATERPROOF
SUITABLE FOR
LACING

Wide
Composite
Soft protection in APT
Leather
Cold-resistant nitrile rubber with PU midsole
Monitor SS2
Monitex membrane
Building, construction and heavy-duty work
BOA® Fit System



HEAVY DUTY



MONITOR HUDSON BAY

EN ISO 20345:2011 S3 CI SRC

Art: 10061301 Sizes: 36-47 Color: Black

FIT	Wide
TOECAP	Composite
PROTECTION	Soft protection in APT
UPPER	Leather and canvas textile
OUTSOLE	PU/TPU
INSOLE	Monitor SS2.0
WATERPROOF	No
SUITABLE FOR	Building, construction and heavy-duty work



MONITOR ICEBREAKER ARCTIC

EN ISO 20345:2011 S3 HRO CI HI SRC

Art: 10079701 Sizes: 36-48 Color: Black

FIT	Regular
TOECAP	Composite
PROTECTION	Soft protection in APT
UPPER	Leather and Cordura
OUTSOLE	Cold-resistant nitrile rubber with PU midsole
INSOLE	Felt insole
WATERPROOF	No
SUITABLE FOR	Building, construction and heavy-duty work



MONITOR POLAR STEALTH

EN ISO 20345:2011 S3 HRO CI HI SRC

Art: 10079601 Sizes: 36-48 Color: Black

FIT	Wide
TOECAP	Composite
PROTECTION	Soft protection in APT
UPPER	Leather and Cordura
OUTSOLE	Cold-resistant nitrile rubber with PU midsole
INSOLE	Lambswool insole
WATERPROOF	No
SUITABLE FOR	Building, construction and heavy-duty work



MONITOR

SPORTWORK

EN ISO 20347:2012

The ideal collection for both work and leisure. These styles are certified in accordance with EN ISO 20347:2012 and designed without a toecap or penetration protection. The design and suppleness are inspired by sports shoes, and the material has been carefully chosen to ensure they deliver the necessary stability and durability – both at work and in your leisure time.





SPORTWORK



MONITOR M EXPRESS

EN ISO 200347:2012 02 SRC ESD

Art: **10040601** Sizes: **35-47** Color: **Black**

FIT	Wide
TOECAP	No
PROTECTION	No
UPPER	PU-coated leather
OUTSOLE	Rubber with EVA midsole
INSOLE	Monitor SS2.0
WATERPROOF	No
SUITABLE FOR	Healthcare and service industries, as well as recreation



MONITOR M EXPRESS

EN ISO 200347:2012 02 SRC ESD

Art: **10040602** Sizes: **35-47** Color: **White**

FIT	Wide
TOECAP	No
PROTECTION	No
UPPER	PU-coated leather
OUTSOLE	Rubber with EVA midsole
INSOLE	Monitor SS2.0
WATERPROOF	No
SUITABLE FOR	Healthcare and service industries, as well as recreation



MONITOR SIERRA

EN ISO 20347:2012 01 HRO SRC ESD

Art: **10040301** Sizes: **33-42** Color: **Black**

FIT	Q-lady
TOECAP	No
PROTECTION	No
UPPER	Seamless microfiber and mesh
OUTSOLE	Rubber with EVA midsole
INSOLE	Monitor SS2.0
WATERPROOF	No
SUITABLE FOR	Work and leisure



MONITOR GREY

EN ISO 20347:2012 01 HRO SRC ESD

Art: **10040708** Sizes: **33-42** Color: **Grey**

FIT	Q-lady
TOECAP	No
PROTECTION	No
UPPER	Seamless microfiber and mesh
OUTSOLE	Rubber with EVA midsole
INSOLE	Monitor SS2.0
WATERPROOF	No
SUITABLE FOR	Work and leisure
LACING	BOA® Fit System



SPORTWORK



MONITOR MASTER

EN ISO 200347:2012 01 SRC

Art: 10041201 Sizes: 36-47 Color: Black

FIT	Wide
TOECAP	No
PROTECTION	No
UPPER	Carbon-reinforced fabric
OUTSOLE	Rubber with PU midsole
INSOLE	Monitor X4
WATERPROOF	No
SUITABLE FOR	Work and leisure
LACING	BOA® Fit System



BOA®



MONITOR CLIP

EN ISO 20347:2012 04 FO SRC

Art: 30055104 Sizes: 36-48 Color: Green

FIT	Wide
TOECAP	No
PROTECTION	No
UPPER	PVC
OUTSOLE	Nitrile rubber
WATER-PROOF	Yes
SUITABLE FOR	Work and leisure



MONITOR MARATHON

EN ISO 200347:2012 02 WR SRC

Art: 10041001 Sizes: 36-47 Color: Black

FIT	Wide
TOECAP	No
PROTECTION	No
UPPER	Microfiber
OUTSOLE	Rubber with PU midsole
INSOLE	Monitor X4
WATERPROOF	Monitex membrane
SUITABLE FOR	Work and leisure
LACING	BOA® Fit System



BOA®



MONITOR

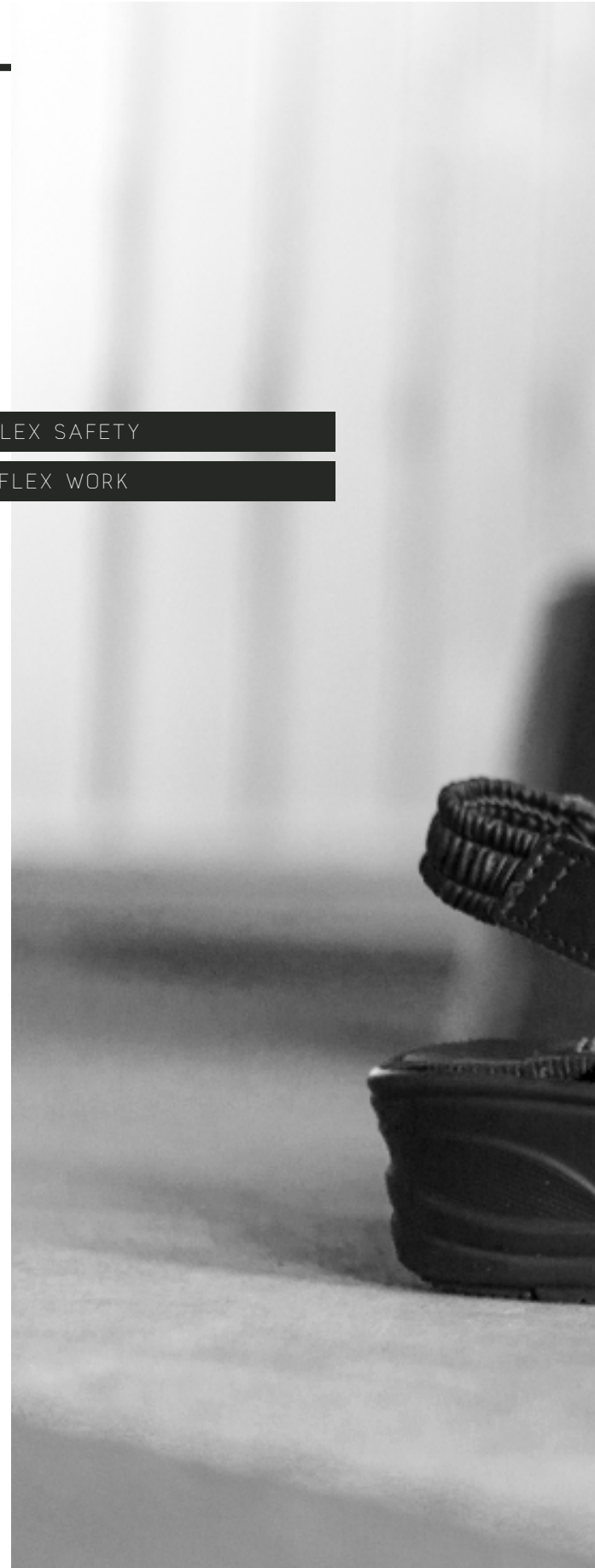
FLEX



FLEX SAFETY

FLEX WORK

Monitor has a range of clogs that are comfortable to wear and reinforced where needed. The ergonomically designed insole with metatarsal arch support and toe grip makes the clog extremely comfortable to wear. The cushioned outsole is non-slip and certified as SRC. Available with or without protection – whatever your requirement.





FLEX



MONITOR BIRKA

EN 20347:2012 OB SRC FO A E

Art: **50078101** Sizes: **35-47** Color: **Black**

FIT	Wide
TOECAP	No
PROTECTION	No
UPPER	PU-coated leather and perforated inside
OUTSOLE	PU
WATERPROOF	No
SUITABLE FOR	Work and leisure

WIDE



MONITOR BIRKA

EN 20347:2012 OB SRC FO A E

Art: **50078102** Sizes: **35-47** Color: **White**

FIT	Wide
TOECAP	No
PROTECTION	No
UPPER	PU-coated leather and perforated inside
OUTSOLE	PU
WATERPROOF	No
SUITABLE FOR	Work and leisure

WIDE



MONITOR BIRKA HEEL STRAP

EN 20347:2012 OB SRC FO A E

Art: **50078121** Sizes: **35-47** Color: **Black**

FIT	Wide
TOECAP	No
PROTECTION	No
UPPER	PU-coated leather and perforated inside
OUTSOLE	PU
WATERPROOF	No
SUITABLE FOR	Work and leisure

WIDE



MONITOR BIRKA HEEL STRAP

EN 20347:2012 OB SRC FO A E

Art: **50078122** Sizes: **35-47** Color: **White**

FIT	Wide
TOECAP	No
PROTECTION	No
UPPER	PU-coated leather and perforated inside
OUTSOLE	PU
WATERPROOF	No
SUITABLE FOR	Work and leisure

WIDE

FLEX SAFETY



MONITOR POSEIDON

EN ISO 20345:2011 SB P SRC FO A E

Art: **40982501** Sizes: **35-47** Color: **Black**

FIT	Wide
TOECAP	Aluminum
PROTECTION	Soft protection in APT
UPPER	PU-coated leather and mesh
OUTSOLE	PU
WATERPROOF	No
SUITABLE FOR	Work and leisure



MONITOR YMER

EN ISO 20345:2011 SB SRC FO A E

Art: **40982301** Sizes: **35-47** Color: **Black**

FIT	Wide
TOECAP	Steel
PROTECTION	No
UPPER	Leather
OUTSOLE	PU
INSOLE	Cambrelle
WATERPROOF	No
SUITABLE FOR	Work and leisure

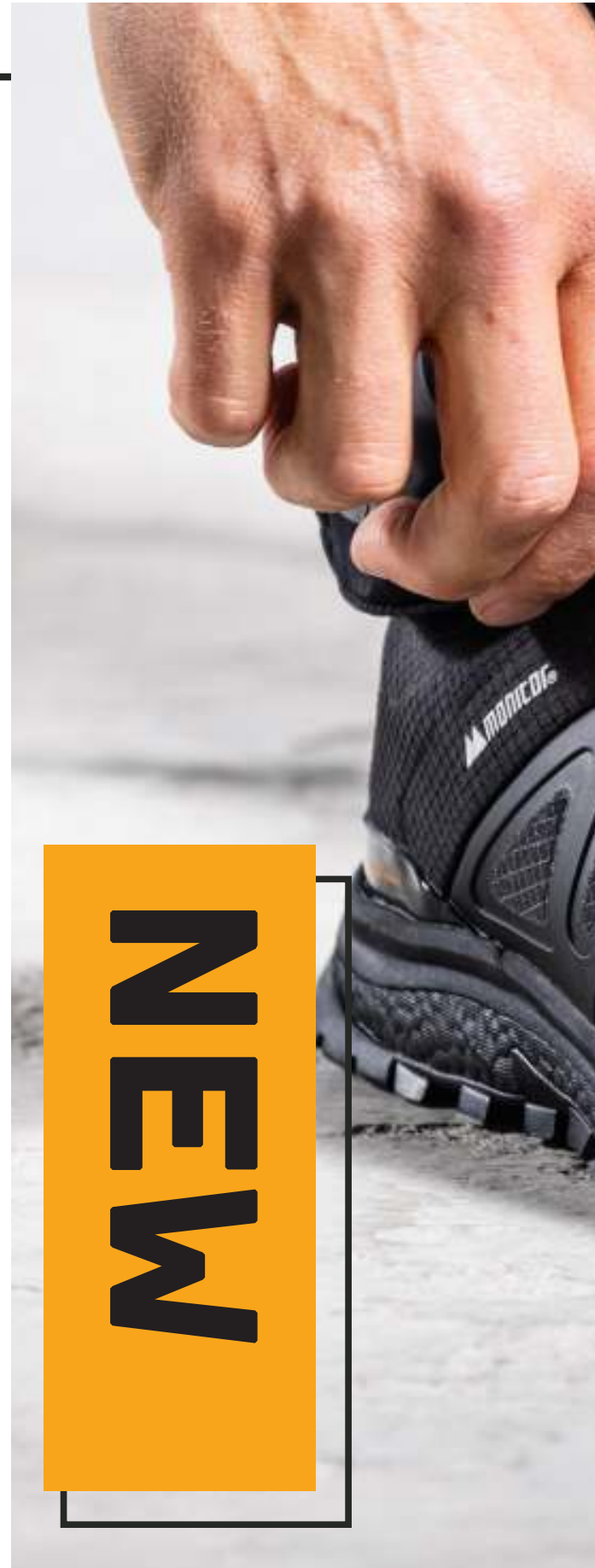


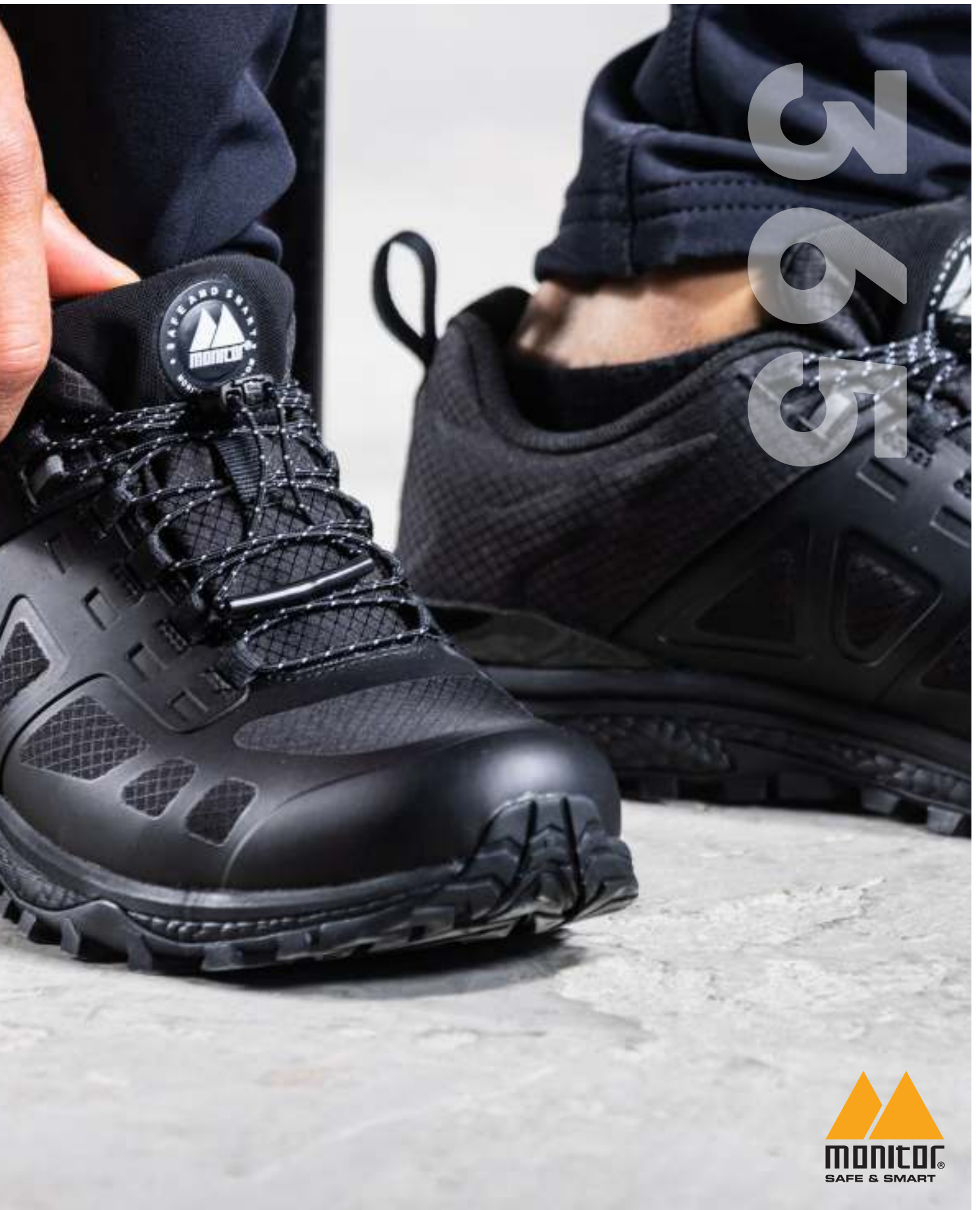
MONITOR

365



365 are lightweight and comfortable light work/sports/casual shoes with a wide range of applications, be it leisure, sports or work when safety footwear is not required.





365



MONITOR VICTORY

Art: 10046001 Sizes: 35-47 Color: Black

FIT	Regular
TOECAP	No
PROTECTION	No
UPPER	Leather
OUTSOLE	Approved slip resistance in accordance with SRC
MIDSOLE	TPU
INSOLE	Memory foam
WATERPROOF	No
SUITABLE FOR	Work, sports and leisure



MONITOR GAME

Art: 10046101 Sizes: 35-47 Color: Black

FIT	Regular
TOECAP	No
PROTECTION	No
UPPER	Mo-knit textile
OUTSOLE	Approved slip resistance in accordance with SRC
MIDSOLE	TPU
INSOLE	Memory foam
WATERPROOF	No
SUITABLE FOR	Work, sports and leisure



MONITOR PERFORM

Art: 10046204 Sizes: 35-47 Color: Green

FIT	Regular
TOECAP	No
PROTECTION	No
UPPER	Mo-knit textile
OUTSOLE	Approved slip resistance in accordance with SRC
MIDSOLE	TPU
INSOLE	Memory foam
WATERPROOF	No
SUITABLE FOR	Work, sports and leisure



MONITOR CYCLONE MNTX

Art: 10046901 Sizes: 36-47 Color: Black

FIT	Regular
TOECAP	No
PROTECTION	No
UPPER	Ripstop and TPU
OUTSOLE	Rubber with EVA midsole
INSOLE	Memory foam
WATERPROOF	Yes
SUITABLE FOR	Work, sports and leisure
LACING	Quick lacing



NEW

365



MONITOR MONIMOC

Art: 10045201 Sizes: 35-47 Color: Black

FIT	Regular
TOECAP	No
PROTECTION	No
UPPER	Textile
OUTSOLE	Rubber with EVA midsole
INSOLE	Memory foam
WATERPROOF	No
SUITABLE FOR	Work, sports and leisure



MONITOR MONIFLEX ONE

Art: 10045101 Sizes: 35-47 Color: Black

FIT	Regular
TOECAP	No
PROTECTION	No
UPPER	Textile and neoprene
OUTSOLE	Rubber with EVA midsole
INSOLE	Memory foam
WATER-PROOF	No
SUITABLE FOR	Work, sports and leisure



MONITOR COPRA MNTX

Art: 10047001 Sizes: 36-47 Color: Black

FIT	Regular
TOECAP	No
PROTECTION	No
UPPER	Coco shell fabric
OUTSOLE	Rubber with EVA midsole
INSOLE	Memory foam
WATERPROOF	Yes
SUITABLE FOR	Work, sports and leisure
LACING	Quick lacing



MONITOR POOL

Art: 10045001 Sizes: 36-47 Color: Black

FIT	Regular
TOECAP	No
PROTECTION	No
UPPER	Eco-friendly polyurethane
OUTSOLE	EVA
INSOLE	No
WATERPROOF	No
SUITABLE FOR	Work, sports and leisure



MONITOR GARMENTS

Monitor Constructed Garments is the essence of all functional attire, stripped down to just the clothes you truly need. Nothing more, nothing less.

A modern, stylish and considered collection in which all the garments match and accentuate each other's best qualities, and one that can handle everything from everyday challenges to long days at work.



CONSTRUCTED
GARMENTS





MONITOR GARMENTS

MONITOR SWEAT ONE

Art: **900102BA** | **900102BD** | **900102BB** Sizes: **XS-XXXL**

- 100% cotton for maximum comfort.
- Scoop neck.
- Breast pocket.
- Raw edge cut.
- Longer in the back.
- Printed care instructions. Wash only at 40 °C.
- No ribbed hem, for the best fit at all times.



MONITOR MIDLAYER JACKET

Art: **900107BA** | **900107BD** Sizes: **XS-XXXL**

- Reverse side is a soft, comfortable microfleece.
- Technostretch on the outside.
- Micro stripe fabric.
- Hidden breast pocket.
- Printed care instructions on the sleeve.
- Concealed front zipper.
- 93% polyester, 7% elastane



MONITOR GARMENTS

NEW

NEW

NEW



MONITOR COTTON SLUB TEE

Art: **900113BD, 900113BF, 900113BG** Sizes: **XS-XXXL**

- Loose fit.
- Printed care instructions – in case you need reminding that it is washed at 40 C.
- Slub yarn for design and structure in the fabric.
- Scoop neck.
- 100% cotton for maximum comfort.
- Long in back.
- Side slits with logo print.
- Yoke seam in back.



MONITOR SWEAT TWO

Art: **900111BD | 900111BC** Sizes: **XS-XXXL**

- Made of cotton and polyester
- Printed logo on the chest
- Waterproof side pockets
- Low-cut neckline
- Detailed stitching for a unique design
- Meshed cuffs
- Contrasting yellow buttons
- Vents with logo strap
- 53% cotton, 47% polyester



MONITOR GARMENTS



MONITOR HOOD ONE

Art: **900103BC** Sizes: **XS-XXXL**

- Hood.
- Generous fit for maximum comfort and mobility.
- Durable scuba fabric.
- Thumb holes to keep you warm on colder days.
- Rubberized logo label.
- Full zipper.
- Blazing yellow zipper.
- Side pockets.
- Printed care instructions on the sleeve, so no itchy labels.
- Yoke seam in back.
- No ribbed hem, for the best fit at all times.
- 80% polyester, 12% viscose, 8% cotton



MONITOR SHELL JACKET

Art: **900106BD** | **900106BE** Sizes: **XS-XXXL**

- Unlined – wear it with a base layer and extra mid layer, adjusting as the weather conditions change.
- Side pockets.
- Waterproof rating of 10,000 mm.
- Built-in membrane for breathability that also keeps you dry.
- Breast pocket.
- Adjustable cuffs.
- Reflective accents, front and back.
- Inner lining of the hood in blazing yellow.
- Taped seams.
- Hood.
- Vibrant, color-treated fabric.
- 100% nylon.



MONITOR GARMENTS



MONITOR GARMENTS



STRETCH



MONITOR VERSATILE 4WS NYLON

Art: 900506BD | 900506BA

Sizes: XS-XXXL

- Internal knee pad pockets
- Adjustable ankles with reflectors
- Hanging pockets with internal reinforcement
- Knife holster and hammer loop
- Four-way stretch for maximum comfort
- 93% nylon, 7% elastane



MONITOR WORKER 4WS NYLON

Art: 900507BA

Sizes: XS-XXXL

- Four-way stretch for maximum comfort
- Adjustable ankles with reflectors
- Denim pockets
- Knife holster and hammer loop
- Leg pocket and folding rule pocket
- 93% nylon, 7% elastane



MONITOR GARMENTS



STRETCH



MONITOR WORKER 4WS NYLON

Art: 900510BA

Sizes: XS-XXXL

- Four-way stretch for maximum comfort
- Knife holster and hammer loop
- Leg pocket and folding rule pocket
- 93% nylon, 7% elastane



MONITOR VERSATILE 4WS NYLON

Art: 900508BA

Sizes: XS-XXXL

- Hanging pockets with internal reinforcement
- Knife holster and hammer loop
- Four-way stretch for maximum comfort
- 93% nylon, 7% elastane



MONITOR GARMENTS



MONITOR BEANIE 10-PACK

Art: **900200BA** | **900200BD** Sizes: **ONESIZE**

- Knitted hat
- Available in black or green
- 100% acrylic
- Sold in packs of 10

STRETCH



MONITOR BELT 10-PACK

Art: **900201BA** | **900201BD** Sizes: **ONESIZE**

- Knitted hat
- Available in black or green
- 100% acrylic
- Sold in packs of 10

MONITOR GARMENTS



MONITOR SOCKS



MONITOR MOMENTUM

Art: **80000401**

Sizes: **37-48**

- Work and leisure socks
- 40% Tactel, 50% polyamide, 3% Bekinox, 7% Lycra
- ESD-approved
- Sold in packs of 2



MONITOR FEATHER LADY

Art: **80000501**

Sizes: **34-42**

- Work and leisure socks
- 35% Coolmax, 30% wool, 27% polyamide, 3% Bekinox, 5% Lycra
- ESD-approved
- Sold in packs of 2



MONITOR SIGMA

Art: **80000601**

Sizes: **37-48**

- Work and leisure socks
- 54% Coolmax, 16% wool, 20% polyamide, 6% silk, 4% Lycra
- Sold in packs of 2



MONITOR COOLMAX

Art: **80000801**

Sizes: **37-48**

- Work and leisure socks
- 64% Coolmax, 32% polyamide, 4% Lycra
- Sold in packs of 2



MONITOR SPORTWORK

Art: **80000701**

Sizes: **34-48**

- Work and leisure socks
- 50% wool, 45% polyamide, 5% Lycra
- Sold in packs of 2



MONITOR STEALTH

Art: **80000901**

Sizes: **37-48**

- Work and hiking socks
- 60% wool, 30% polyamide, 6% silk, 4% Lycra
- Single-pair pack

MONITOR SOCKS



MONITOR MONISHE REBOUND

Art: **80023001**

Sizes: **33-42**

- This sock is designed for work, sports and leisure and is made from 33% DRYARN®, which is a very lightweight, extremely breathable, quick-drying and insulating material. It also contains 64% polyamide and 3% Lycra. MoniShe Rebound has been specially designed for women's feet. To ensure added comfort, this sock also has woven cushioning zones under the heel and toes, which serve as reinforcement.



MONITOR M-REBOUND

Art: **80023101**

Sizes: **36-48**

- This sock is designed for work, sports and leisure and is made from 33% DRYARN®, which is a very lightweight, extremely breathable, quick-drying and insulating material. It also contains 64% polyamide and 3% Lycra. To ensure added comfort, this sock also has woven cushioning zones under the heel and toes, which serve as reinforcement.



MONITOR ACCESSORIES



MONITOR ARCH SUPPORT

Art: 800330AL Sizes: 35-48



MONITOR ARCH SUPPORT

Art: 800330AM Sizes: 35-48



MONITOR ARCH SUPPORT

Art: 800330AS Sizes: 35-48



MONITOR SS2.0 CUSHION

Art: 80033201 Sizes: 33-48

- Dual-density polyurethane
- ESD class 1
- Arch support
- Heel cup for better support
- Suitable for all Monitor safety shoes and occupational footwear



MONIFRESH - SKUNK BUSTER

Art: 800333 Sizes: ONESIZE

Deodorizing pouches that absorb moisture, eliminate odor and leave a fresh scent. Place them overnight in shoes, drawers, bags or sports equipment. The pouches may sometimes need to be left in place for longer to achieve full effect.

Scent lasts approx. 2-4 months. The pouches are designed to remove moisture and eliminate odor for up to 1 year. Refresh pouches after prolonged use by hanging them up in a well-ventilated space. Then shake gently until the pouch and its contents return to their original state.

MONITOR SHOELACES

- | | | |
|---|--------|--|
| 1 | 800320 | 80 cm round/black - 10-pack |
| 2 | 800321 | 100 cm round/black - 10-pack |
| 3 | 800322 | 120 cm round/black - 10-pack |
| 4 | 800323 | 150 cm round/black - 5-pack |
| 5 | 800324 | 120 cm 3x3 mm/black leather - 5-pack |
| 6 | 800325 | 100 cm round/black. Flameproof - 10-pack |





PARTNER BRANDS



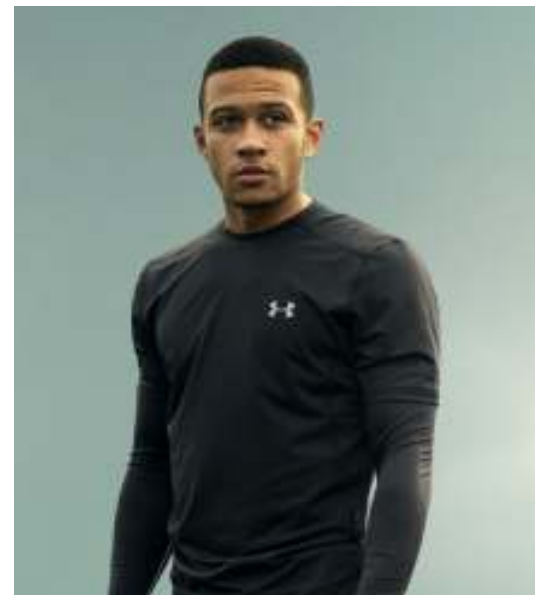


SALMING.

BIRKENSTOCK®
PROFESSIONAL

BJÖRN BORG 

Reebok 





BIRKENSTOCK PROFESSIONAL

SUPER GRIP-SOLE

BIRKENSTOCK
PROFESSIONAL



BIRKENSTOCK ARIZONA SL



Art: 101822201

Sizes: 35-46

Color: Black



Art: 101822301

Sizes: 35-41

Color: Black

» Non-slip sandal. Perfect for hospitals & kitchens.



NEW

BIRKENSTOCK ARIZONA SL



Art: 101822102

Sizes: 36-41

Color: White

» Non-slip sandal. Perfect for hospitals & kitchens.





BIRKENSTOCK PROFESSIONAL

SUPER GRIP-SOLE

BIRKENSTOCK
PROFESSIONAL



BIRKENSTOCK ARIZONA SL

Art: 23015401 Sizes: 40-48 Color: Black

» Non-slip sandal. Perfect for hospitals & kitchens.



BIRKENSTOCK ARIZONA SL

REGULAR FIT Art: 23016402 Sizes: 41-46 Color: White

» Non-slip sandal. Perfect for hospitals & kitchens.



BIRKENSTOCK BOSTON SL

REGULAR FIT Art: 06013402 Sizes: 41-46 Color: White

» Non-slip sandal. Perfect for hospitals & kitchens.



BIRKENSTOCK BOSTON SL

REGULAR FIT Art: 06019401 Sizes: 41-46 Color: Black

NARROW FIT Art: 06019601 Sizes: 36-41 Color: Black

» Non-slip sandal. Perfect for hospitals & kitchens.



BIRKENSTOCK TOKIO SL

REGULAR FIT Art: 06113402 Sizes: 41-46 Color: White

» Non-slip sandal. Perfect for hospitals & kitchens.



BIRKENSTOCK TOKIO SL

REGULAR FIT Art: 06119401 Sizes: 41-46 Color: Black

NARROW FIT Art: 06119601 Sizes: 36-41 Color: Black

» Non-slip sandal. Perfect for hospitals & kitchens.





BIRKENSTOCK PROFESSIONAL

SOFIA & KANO

BIRKENSTOCK
PROFESSIONAL



BIRKENSTOCK SOFIA

Art: 26313302

Sizes: 36-41

Color: White

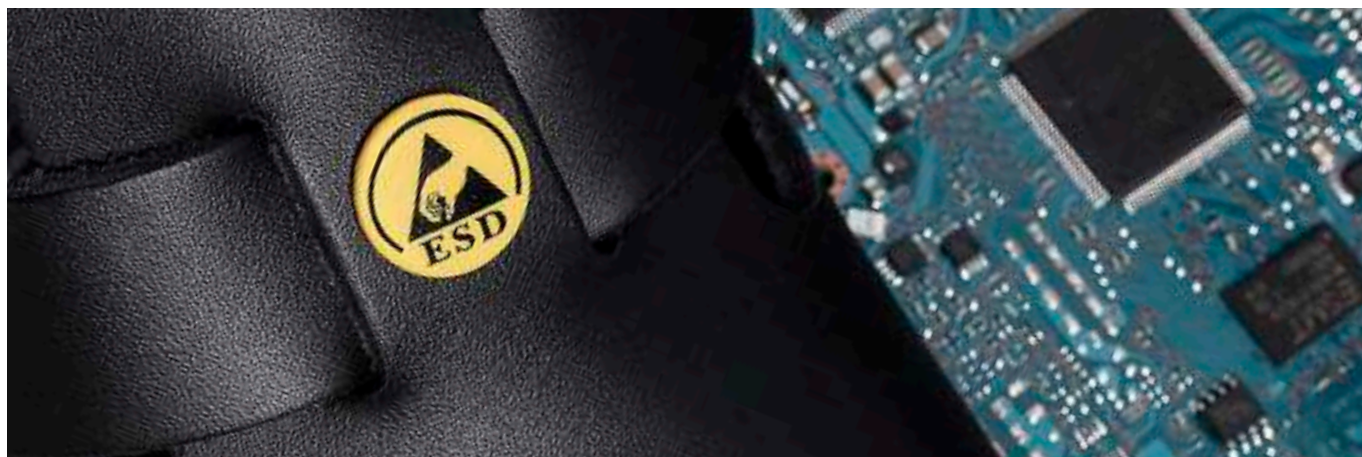




BIRKENSTOCK PROFESSIONAL

ESD - SAFETY

BIRKENSTOCK
PROFESSIONAL



BIRKENSTOCK ARIZONA ESD



Art: 08941002

Sizes: 41-46

Color: White



BIRKENSTOCK ARIZONA ESD



Art: 08942001

Sizes: 41-46

Color: Black



Art: 08942801

Sizes: 35-41

Color: Black



BIRKENSTOCK MILANO ESD



Art: 63488002

Sizes: 41-46

Color: White



BIRKENSTOCK MILANO ESD



Art: 63479001

Sizes: 41-46

Color: Black





BIRKENSTOCK PROFESSIONAL

PU - SHOES | SUPER BIRKI

BIRKENSTOCK
PROFESSIONAL



BIRKENSTOCK SUPER BIRKI

EN ISO 20347:2012 OBE SRC

Art: 06801101 **Sizes:** 35-41 **Color:** Black

Replaceable cork footbed, art. no.: 1201127

Perfect for kitchens & gardens

Super Birki can be washed at 80 °C | Footbed 30 °C



BIRKENSTOCK SUPER BIRKI

EN ISO 20347:2012 OBE SRC

Art: 06802102 **Sizes:** 35-40 **Color:** White

Replaceable cork footbed, art. no.: 1201127

Perfect for kitchens & gardens

Super Birki can be washed at 80 °C | Footbed 30 °C





BIRKENSTOCK PROFESSIONAL

PU - SHOES | SUPER BIRKI

BIRKENSTOCK
PROFESSIONAL





BIRKENSTOCK PROFESSIONAL

Q0400 - Q0500 - Q0700

BIRKENSTOCK
PROFESSIONAL



BIRKENSTOCK PROFESSIONAL Q0500

EN ISO 20347:2012 02 WRU SRC

Art: 101124401 **Sizes:** 35-47 **Color:** Black

FIT	Regular
CERTIFIERAD	Classification 02 in accordance with EN ISO 20347:2012
UPPER	Leather upper, lined with microfiber
OUTSOLE	Outsole of non-slip (SRC) nitrile rubber
SUPPORT	Orthopedic and removable cork footbed.
SUITABLE FOR	Professionals in kitchens, catering, healthcare, offices

02



BIRKENSTOCK PROFESSIONAL Q0700

EN ISO 20347:2012 02 WRU SRC

Art: 101124901 **Sizes:** 35-48 **Color:** Black

FIT	Regular
CERTIFIERAD	Classification 02 in accordance with EN ISO 20347:2012
UPPER	Leather upper, lined with microfiber
OUTSOLE	Outsole of non-slip (SRC) nitrile rubber
SUPPORT	Orthopedic and removable cork footbed.
SUITABLE FOR	Professionals in kitchens, catering, healthcare, offices

02



BIRKENSTOCK PROFESSIONAL

Q0400 - Q0500 - Q0700

BIRKENSTOCK
PROFESSIONAL



BIRKENSTOCK PROFESSIONAL Q0500

EN ISO 20347:2012 02 WRU SRC

Art: 101124802

Sizes: 35-48

Color: White

FIT Regular
CERTIFIERAD Classification 02 in accordance with EN ISO 20347:2012
UPPER Microfiber upper, lined with microfiber
OUTSOLE Outsole of non-slip (SRC) nitrile rubber
SUPPORT Orthopedic and removable cork footbed.
SUITABLE FOR Professionals in kitchens, catering, healthcare, offices

02



BIRKENSTOCK PROFESSIONAL Q0400

EN ISO 20347:2012 02 WRU SRC

Art: 101124302

Sizes: 35-48

Color: White

FIT Regular
CERTIFIERAD Classification 02 in accordance with EN ISO 20347:2012
UPPER Microfiber upper, lined with microfiber
OUTSOLE Outsole of non-slip (SRC) nitrile rubber
SUPPORT Orthopedic and removable cork footbed.
SUITABLE FOR Professionals in kitchens, catering, healthcare, offices

02





SALOMON XA PRO GTX

ART	200523-01
Sizes	36-49
Color	Black



- » Quicklace lacing system
- » Contagrip running sole
- » Gore-Tex membrane
- » Ortholite insole
- » 3D Advanced Chassis





NEW

SALOMON XA PRO GTX

ART 200523-34
 Sizes 41-47
 Color Black/Orange



- » Quicklace lacing system
- » Contagrip running sole
- » Gore-Tex membrane
- » Ortholite insole
- » 3D Advanced Chassis



NEW

SALOMON XA PRO GTX

ART 200523-11
 Sizes 36-40
 Color Orange



- » Quicklace lacing system
- » Contagrip running sole
- » Gore-Tex membrane
- » Ortholite insole
- » 3D Advanced Chassis





SALOMON OUTBOUND

ART	200582-03
Sizes	41-47
Color	Blue

- » Walking shoe
- » Upper with durable mesh
- » Seamless fit
- » Contagrip outsole
- » Ortholite insole



SALOMON OUTBOUND

ART	200582-12
Sizes	36-40
Color	Grey



- » Walking shoe
- » Upper with durable mesh
- » Seamless fit
- » Contagrip outsole
- » Ortholite insole





SALOMON OUTBOUND

ART	200582-29
Sizes	41-47
Color	Blue

- » Walking shoe
- » Upper with durable mesh
- » Seamless fit
- » Contagrip outsole
- » Ortholite insole



SALOMON SENSE FEEL

ART	200581-00
Sizes	36-47
Color	Grey

- » Well-cushioned running shoe
- » Seamless fit
- » Contagrip running sole
- » Ortholite insole
- » Quicklace





SALOMON XA DISCOVERY GTX

ART | 200578-03
Sizes | 41-47
Color | Blue



- » Walking shoe
- » Gore-Tex membrane
- » Contagrip outsole with tread pattern
- » Vibe system for maximum cushioning
- » SensiFit
- » Quicklace lacing system



SALOMON XA TICA0 GTX

ART | 200564-01
Sizes | 36-47
Color | Black



- » Walking shoe
- » Mesh and textile upper
- » Gore-Tex membrane
- » Pronation support
- » Contagrip walking outsole
- » Ortholite insole





SALOMON CROSSAMPHIBIAN SWIFT

ART	200571-03
Sizes	41-47
Color	Black / Blue

- » Running shoe that is great on land and in the water
- » Quick-drying mesh upper with a tight fit
- » Built-up sole that provides good stability
- » Wet Traction Contagrip® for wet surfaces.



SALOMON CROSSAMPHIBIAN SWIFT

ART	200571-58
Sizes	42-47
Color	Green / Yellow

- » Running shoe that is great on land and in the water
- » Quick-drying mesh upper with a tight fit
- » Built-up sole that provides good stability
- » Wet Traction Contagrip® for wet surfaces.







SALOMON ALPHACROSS BLAST

ART | 200576-08
Sizes | 36-40
Color | Grey



- » Running shoe
- » Contagrip® outsole ready for any surface.
- » Mesh upper
- » The EnergyCell midsole absorbs impact shock as you run.
- » Ortholite insole



NEW

SALOMON ALPHACROSS GTX

ART | 200586-01
Sizes | 36-47
Color | Black

- » Running shoe
- » Contagrip® outsole ready for any surface.
- » Mesh upper
- » The EnergyCell midsole absorbs impact shock as you run.
- » Ortholite insole



SALOMON ALPHACROSS BLAST

ART | 200576-01
Sizes | 41-47
Color | Black

- » Running shoe
- » Contagrip® outsole ready for any surface.
- » Mesh upper
- » The EnergyCell midsole absorbs impact shock as you run.
- » Ortholite insole



SALOMON ALPHACROSS BLAST

ART | 200576-07
Sizes | 36-40
Color | VINRed



- » Running shoe
- » Contagrip® outsole ready for any surface.
- » Mesh upper
- » The EnergyCell midsole absorbs impact shock as you run.
- » Ortholite insole



NEW

SALOMON OUTSNAP CS WP

ART | 200584-01
Sizes | 41-47
Color | Black

- » Practical half boot
- » CS membrane that covers and waterproofs the whole shoe
- » Lined with microfleece
- » Contagrip outsole for better grip



NEW

SALOMON OUTSNAP CS WP

ART | 200584-01
Sizes | 36-40
Color | Black

Lady

- » Practical half boot
- » CS membrane that covers and waterproofs the whole shoe
- » Lined with microfleece
- » Contagrip outsole for better grip



SALOMON OUTLINE MID GTX

ART | 200575-82
Sizes | 41-47
Color | Black / Green



- » Unlined half boot
- » Gore-Tex membrane
- » Ortholite insole for high comfort
- » Contagrip outsole with 5 mm rubber studs for good grip
- » Upper with durable mesh and reinforced toe box



NEW

SALOMON OUTLINE PRISM GTX

ART | 200585-01
Sizes | 36-47
Color | Black

Lady

- » Unlined half boot
- » Ortholite insole for high comfort
- » Gore-Tex membrane
- » Contagrip outsole with 5 mm rubber studs



SALOMON TOUNDRA CS WP

ART	200514-01			
Sizes	41-47			
Color	Black			

- » A hard-wearing winter boot.
- » It guarantees insulation at temperatures as low as -40 °C
- » Contragrip winter outsole with exceptional grip on snow and ice
- » With lace hooks and fur lined shaft
- » Waterproof with Climashield



SALOMON TOUNDRA CS WP

ART	200514-01				
Sizes	36-40				
Color	Black				

- » A hard-wearing winter boot.
- » It guarantees insulation at temperatures as low as -40 °C
- » Contragrip winter outsole with exceptional grip on snow and ice
- » With lace hooks and fur lined shaft
- » Waterproof with Climashield





NEW

UNDER ARMOUR CHARGED BANDIT

ART 300825-01
 Sizes 36-47
 Color Black

- » Neutral, lightweight running shoe
- » Lightweight mesh upper with film coating
- » Charged Cushioning® in the midsole
- » Removable insole
- » Outsole with durable rubber
- » Drop: 8 mm



NEW

UNDER ARMOUR CHARGED BANDIT

ART 300825-23
 Sizes 41-47
 Color White

- » Neutral, lightweight running shoe
- » Lightweight mesh upper with film coating
- » Charged Cushioning® in the midsole
- » Removable insole
- » Outsole with durable rubber
- » Drop: 8 mm



NEW

UNDER ARMOUR CHARGED BANDIT

ART 300825-02
 Sizes 36-40
 Color White



- » Neutral, lightweight running shoe
- » Lightweight mesh upper with film coating
- » Charged Cushioning® in the midsole
- » Removable insole
- » Outsole with durable rubber
- » Drop: 8 mm



UNDER ARMOUR CHARGED BANDIT

ART 300815-02
 Sizes 36-40
 Color White



- » Neutral, lightweight running shoe
- » Lightweight mesh upper with film coating
- » Charged Cushioning® in the midsole
- » Removable insole
- » Outsole with durable rubber
- » Drop: 8 mm



NEW

UNDER ARMOUR CHARGED PURSUIT

ART	300826-01
Sizes	36-47
Color	Black

- » For training and everyday wear
- » Charged Cushioning® in the midsole
- » Knitted mesh upper
- » Outsole with durable rubber
- » Drop: 8 mm



NEW

UNDER ARMOUR CHARGED FOCUS

ART	300827-08
Sizes	41-47
Color	Grey

- » Neutral, lightweight running shoe
- » Mesh upper for superior ventilation
- » Charged Cushioning® in the midsole
- » Outsole with durable rubber
- » Drop: 8 mm





UNDER ARMOUR RIPPLE

ART	300809-42
Sizes	36-41
Color	Black / Purple



- » A lightweight shoe suitable for training and everyday wear.
- » Coarse mesh upper and EVA outsole.
- » The heel loop makes it easy to slip on.



UNDER ARMOUR RIPPLE

ART	300809-04
Sizes	41-44
Color	Green

- » A lightweight shoe suitable for training and everyday wear.
- » Coarse mesh upper and EVA outsole.
- » The heel loop makes it easy to slip on.





UNDER ARMOUR COMMIT

ART	300824-01
Sizes	41-47
Color	Black

- » Training shoe
- » Lightweight mesh and leather upper with excellent ventilation.
- » Midsole with energy-providing Charged Cushioning®
- » Outsole with durable rubber
- » 8 mm drop



UNDER ARMOUR CHARGED PULSE

ART	300817-51
Sizes	42-47
Color	Blue

- » Neutral, lightweight running shoe
- » Lightweight mesh upper with film coating
- » Charged Cushioning® in the midsole
- » Removable insole
- » Outsole with durable rubber





UA SWEATER

ART	300907-01
Sizes	S-XXL
Color	Black

- » Compression top with long sleeves
- » The double layer of ColdGear material retains heat and wicks moisture away.
- » Collar with UA logo for protection and warmth



UA SHORT-SLEEVE SHIRT

ART	300913-01
Sizes	XS-XL
Color	Black



- » Super-lightweight HeatGear® material provides breathability.
- » Signature Moisture Transport System offers effective moisture wicking.
- » 4-way stretch increases mobility.
- » Fitted design.





UA CAP

ART	300910-03
Sizes	M/L, L/XL
Color	Blue

- » Stretch fit and curved visor.
- » Embroidered Under Armour logo
- » HeatGear® material.
- » Contains polyester and elastane



UA CAP

ART	300910-01
Sizes	M/L, L/XL
Color	Black

- » Stretch fit and curved visor.
- » Embroidered Under Armour logo
- » HeatGear® material.
- » Contains polyester and elastane



SALMING.



SALMING EAGLE

ART	300705-01
Sizes	41-47
Color	Black

- » Training shoe for all types of indoor sports
- » KPU-reinforced upper which provides stability and added durability
- » Outsole with asymmetrical Hexagrip tread



SALMING GREYHOUND

ART	300700-16
Sizes	36-40
Color	Turquoise



- » Neutral running shoe.
- » Mesh upper.
- » The Recoil PLUS midsole gives your steps more energy.
- » Vibram outsole.
- » 6 mm drop.





SALMING GREYHOUND

ART	300700-23
Sizes	41-47
Color	White



- » Neutral running shoe.
- » Mesh upper.
- » The Recoil PLUS midsole gives your steps more energy.
- » Vibram outsole.
- » 6 mm drop.



SALMING BOLD PRINT TEE

ART	300502-75
Sizes	S-XXL
Color	Red

- » Training t-shirt in soft and thin polyester mesh that keeps you cool and dry.





BJÖRN BORG T305 LOW

ART	200715-02
Sizes	36-46
Color	White

- » Trendy sneaker
- » Synthetic leather upper, fabric lining.
- » Rubber outsole.



BJÖRN BORG R130

ART	200713-03
Sizes	40-46
Color	Blue

- » Sneaker model with sporty profile
- » Knitted textile upper
- » Rubber outsole



BB T-SHIRT LOGO

ART	200208-01
Sizes	S-XXL
Color	Black

- » Training t-shirt
- » Regular fit
- » Fast-drying Hydro Pro material
- » 90% polyester, 10% elastane



BB T-SHIRT LOGO

ART	200208-02
Sizes	S-XXL
Color	White

- » Training t-shirt
- » Regular fit
- » Fast-drying Hydro Pro material
- » 90% polyester, 10% elastane



BB SHORTS LOGO

ART	200209-01
Sizes	S-XXL
Color	Black

- » Björn Borg shorts
- » Fast-drying Hydro Pro material
- » Side and inner pockets
- » 5 cm wide elastic band with logo.
- » 92% polyester, 8% elastane



BJÖRN BORG X200 LOW

ART	200700-01
Sizes	36-46
Color	Black

- » Very lightweight and flexible shoe with a sporty look.
- » Textile upper.
- » Phylon outsole.



BJÖRN BORG TOILET CASE

ART	200291-01
Sizes	B 26 cm, H 16 cm, D 12 cm
Color	Black

- » Polyester toilet case
- » Three compartments inside



BJÖRN BORG BACKPACK

ART	200290-01
Sizes	B 32 cm, H 44 cm, D 20 cm
Color	Black

- » Polyester backpack
- » Main compartment with double zipper pullers
- » Padded shoulder straps and back panel
- » Concealed front zipper pocket
- » Neoprene pocket for digital devices



BJÖRN BORG GEOFF CHAPA

ART	200703-03
Sizes	41-47
Color	Blue

- » Sneaker with a sporty look.
- » Leather and textile upper.
- » Rubber outsole.



BJÖRN BORG HENRY

ART	200704-01
Sizes	41-47
Color	Black

- » A comfortable sneaker with nylon and leather upper
- » Rubber outsole.



BJÖRN BORG COLTRANE

ART	200702-10
Sizes	41-47
Color	Brown

- » Heavy-duty sneaker
- » Suede and leather upper
- » Rubber outsole



BJÖRN BORG ALRIK

ART	200710-01
Sizes	41-47
Color	Black

- » Heavy-duty high-top sneaker
- » Leather upper
- » Rubber outsole



BJÖRN BORG JENS

ART	200711-01
Sizes	41-47
Color	Black

- » Boot in soft leather with elastic inserts
- » Rubber outsole



BJÖRN BORG ALEC MID FUR

ART	200706-05
Sizes	41-47
Color	Brown

- » Sneaker model
- » Half boot
- » Waxed suede and leather upper
- » Lined with faux fur
- » Rubber outsole



BJÖRN BORG MARTYN MID FUR

ART	200712-01
Sizes	41-47
Color	Black

- » Sneaker model
- » Half boot
- » Leather upper
- » Lined with faux fur
- » Rubber outsole



BB BOXER COTTON 3-PACK

ART	200201-01
Sizes	S-XXL
Color	Black

- » Boxer briefs with a snug fit
- » 3-pack boxer briefs
- » 95% cotton, 5% elastane
- » Mid-rise waist, longer leg length
- » 3 cm elastic with Björn Borg logo.



BB BOXER COTTON 3-PACK

ART	200201-03
Sizes	S-XXL
Color	Blue

- » Boxer briefs with a snug fit
- » 3-pack boxer briefs
- » 95% cotton, 5% elastane
- » Mid-rise waist, longer leg length
- » 3 cm elastic with Björn Borg logo.



BB BOXER COTTON 5-PACK

ART	200202-01
Sizes	S-XXL
Color	Black

- » Boxer briefs with a snug fit
- » 5-pack boxer briefs
- » 95% cotton, 5% elastane
- » Mid-rise waist, longer leg length
- » 3 cm elastic with Björn Borg logo.



BB BOXER COTTON 5-PACK

ART	200202-03
Sizes	S-XL
Color	MIX

- » Boxer briefs with a snug fit
- » 5-pack boxer briefs
- » 95% cotton, 5% elastane
- » Mid-rise waist, longer leg length
- » 3 cm elastic with Björn Borg logo.



BB BOXER PANEL 1-PACK

ART	200213-01
Sizes	S-XXL
Color	Black

- » Mid-rise waist
- » Stretchy polyamide
- » Moisture-wicking Hydro Pro material
- » Flat seams to prevent chafing
- » 3.5 cm wide elastic waist with logo
- » 90% recycled polyester, 10% elastane



BB BOXER DIGITAL 1-PACK

ART	200214-04
Sizes	S-XXL
Color	Green

- » Mid-rise waist
- » Stretchy polyamide
- » Moisture-wicking Hydro Pro material
- » Flat seams to prevent chafing
- » 3.5 cm wide elastic waist with logo
- » 90% recycled polyester, 10% elastane



NEW

BB SOCKS 5-PACK

ART	200204-01
Sizes	41/45
Color	Black

- » Björn Borg logo on the underside
- » Suitable for training and everyday wear.
- » 60% cotton, 30% polyester, 8% polyamide, 2% elastane



BB SOCKS 3-PACK

ART	200205-02
Sizes	35/38 39/42, 43/46
Color	White

- » 3-pack ankle socks
- » Björn Borg logo on the ankle
- » Suitable for training and everyday wear.
- » 65% cotton, 33% polyester, 2% elastane



NEW

BB SOCKS 3-PACK

ART	200205-01
Sizes	35/38 39/42, 43/46
Color	Black

- » 3-pack ankle socks
- » Björn Borg logo on the ankle
- » Suitable for training and everyday wear.
- » 65% cotton, 33% polyester, 2% elastane



NEW

BB HIPSTER 2-PACK

ART	200217-01
Sizes	XS-XL
Color	Black



- » Comfortable and soft
- » Tight fit
- » Seamless
- » 71% polyamide, 29% elastane



NEW

BB PERFORMANCE 1-PACK

ART	201258-01
Sizes	S-XXL
Color	Black

- » Mid-rise waist
- » Stretchy polyamide
- » Moisture-wicking Hydro Pro material
- » Flat seams to prevent chafing
- » 3.5 cm wide elastic waist with logo
- » 90% recycled polyester, 10% elastane

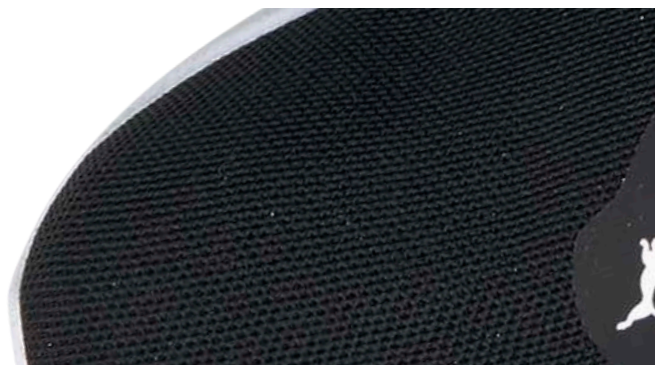


NEW

BB PERFORMANCE 1-PACK

ART	201258-00
Sizes	S-XXL
Color	Black / White

- » Mid-rise waist
- » Stretchy polyamide
- » Moisture-wicking Hydro Pro material
- » Flat seams to prevent chafing
- » 3.5 cm wide elastic waist with logo
- » 90% recycled polyester, 10% elastane



PUMA SUTAMINA SPEED

ART	200903-79
Sizes	41-47
Color	Black

- » Neutral running shoe
- » Replaceable Softfoam insole
- » Mesh upper with reflective details
- » PROFOAM midsole that adds energy to your step
- » Speedtraction outsole for optimal grip



PUMA SERVE PRO

ART	200907-02
Sizes	39-47
Color	White

- » Classic sneaker
- » Leather, suede & synthetic upper
- » Rubber outsole



PUMA SUTAMINA SPEED

ART	200903-01
Sizes	41-47
Color	Black

- » Neutral running shoe
- » Replaceable Softfoam insole
- » Mesh upper with reflective details
- » PROFOAM midsole that adds energy to your step
- » Speedtraction outsole for optimal grip



PUMA SERVE PRO

ART	200907-37
Sizes	36-41
Color	White

- » Classic sneaker
- » Leather, suede & synthetic upper
- » Rubber outsole

Lady



NEW

PUMA BETTER FOAM

ART	200909-01
Sizes	42-47
Color	Black

- » Upper made from sugar cane
- » Sole made from 100% recycled EVA
- » PUMA's global better material series



NEW

PUMA BETTER FOAM

ART	200909-01
Sizes	36-41
Color	Black

- » Upper made from sugar cane
- » Sole made from 100% recycled EVA
- » PUMA's global better material series





PUMA SPEED 600

ART	200901-01
Sizes	41-47
Color	Black

- » Neutral running shoe
- » Replaceable Softfoam insole
- » Mesh upper with reflective details
- » HYBRID foam midsole for cushioning, while the bottom layer with PROFOAM adds energy to your step.
- » Speedtraction outsole for optimal grip



PUMA SPEED 600

ART	200901-17
Sizes	36-40
Color	Pink



- » Neutral running shoe
- » Replaceable Softfoam insole
- » Mesh upper with reflective details
- » HYBRID foam midsole for cushioning, while the bottom layer with PROFOAM adds energy to your step.
- » Speedtraction outsole for optimal grip



PUMA SPEED 500

ART	200902-64
Sizes	41-47
Color	Yellow

- » Neutral, lightweight running shoe
- » Replaceable Softfoam insole
- » Breathable mesh upper with metatarsal support
- » PROFOAM midsole that adds energy to your step
- » Speedtraction outsole for optimal grip



PUMA ELATE NRGY

ART	200904-01
Sizes	36-47
Color	Black

- » Neutral running shoe
- » Replaceable Softfoam insole
- » NRGY midsole for outstanding cushioning
- » Rubber outsole



PUMA SOFTRIDE VITAL REPEL

ART	200908-01
Sizes	41-47
Color	Black

- » Light shoe with a slightly wider fit
- » Softfoam insole from heel to toe
- » PUMA's softest shoe, 17% softer than standard EVA
- » Shock absorption that spares your feet and knees.
- » Water-repellent

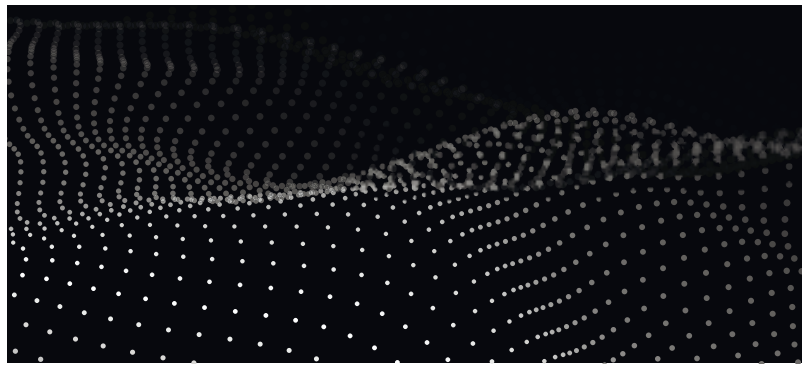


PUMA SOFTRIDE VITAL REPEL

ART	200908-12
Sizes	36-40
Color	Grey

- » Light shoe with a slightly wider fit
- » Softfoam insole from heel to toe
- » PUMA's softest shoe, 17% softer than standard EVA
- » Shock absorption that spares your feet and knees.
- » Water-repellent





REEBOK TIME & HALF

ART 300618-01
Sizes 35-47
Color Black

DMX

- » Walking/occupational shoe
- » Artificial leather upper.
- » Features DMX ride cushioning.
- » Non-slip and oil-resistant outsole.

TIME & HALF

Reebok 



ACCESSORIES



FELT INSOLE

ART | 800132-12
Sizes | 35-47

» Hygienic thin and supple felt insole to keep feet warm and dry.



ALU IGLOO INSOLE

ART | 800189
Sizes | 35-47

» Warm and highly insulating insole made of felt and aluminum



MONIFRESH - SKUNK BUSTER

ART | 800333
Sizes | ONESIZE

» Deodorizing pouches that absorb moisture, eliminate odor and leave a fresh scent.



SPORT INSOLE 2GO

ART | 800133-01
Sizes | 35-47

» Molded insole for sports and casual shoes.
» Provides additional heel and arch support.
» Insulates against the cold and wet.



BIRKENSTOCK FOOTBED

ART | 010001 - REGULAR FIT
ART | 010002 - NARROW FIT
Sizes | 35-47

» Orthopedic-style cork footbed.
» Provides relief and support.
» Fits all shoes.



LEATHER LACE ON ROLL

ART | 800089
Sizes | 50 M



LAMBSWOOL INSOLE

ART | 800136-10
Sizes | 35-47

» The ideal winter insole. Lambswool with an underside of wool felt.



OURALINE SAPHIR RUB

ART | 800304
Sizes | 100 ML

» Wild boar grease for care and impregnation.

» Effective impregnation.



LEATHER LACE ON ROLL

ART | 800088
Sizes | 50 M

ACCESSORIES



SHOE DEODORANT

ART 800094
Sizes 100 ML

» YocoAir shoe deodorant



PROTECTOR

ART 800302
Sizes 250 ML

» Leather impregnation spray that protects your shoes and extends their life



SHOE CREAM FOR LEATHER

ART 800301
Sizes 75 ML

» Protects and strengthens leather shoes.



SHOE BRUSH

ART 800116
Sizes ONESIZE

» Brush for suede and nubuck.



SHOE BRUSH

ART 800101
Sizes ONESIZE

» Double-sided wooden shoe brush.



SHOE POLISH

ART 800303
Sizes ONESIZE



MEASURING STICK WOOD

ART 800123
Sizes ONESIZE

» Size measuring stick with conversion chart.



MEASURING STICK IN-SHOE

ART 800122
Sizes ONESIZE

» Measuring stick for in-shoe measurement.



MONITOR SHOE HORN

ART 800109
Sizes 53 CM



FOLLOW OUR JOURNEY



facebook.com/**monitorbrand**
instagram.com/**monitorbrand**

#**monitorbrand**







SALES MANAGER SWEDEN

Johan Thuresson
070-667 89 04
johan.thuresson@bastadgruppen.se

1

AREA SALES

Markus Winqvist
070-695 54 25
markus.winqvist@bastadgruppen.se

2

AREA SALES

Pierre Jaderlöv
070-953 23 22
pierre.jaderlow@bastadgruppen.se

3

AREA SALES

Linus Ljunggren
073-095 78 30
linus.ljunggren@bastadgruppen.se

4

AREA SALES

Magnus Forssten
070-225 16 09
magnus.forssten@bastadgruppen.se

5

AREA SALES

David Hamre
+47 (0)902 83 901
david.hamre@bastadnorge.no

6

AREA SALES

Madelen W. Ramsfjell
+47 (0)93 43 33 52
madelen.ramsfjell@bastadnorge.no

7

AREA SALES

Fredrik Magnusson
+ 47 (0) 942 57 672
fredrik.magnusson@bastadnorge.no

8

SALES MANAGER WESTERN EUROPE

Filipe Francisco
+351 962 519 502
filipe.francisco@bastadgruppen.com

9

**SALES MANAGER
DENMARK, ICELAND, FINLAND
& EASTERN EUROPE**

Lars Raunkjær
+45 31 400 002
+420-725907988
lars.raunkjaer@bastadgruppen.com



BÅSTAD GRUPPEN AB

BOX 1031, SE-262 21 Ängelholm, Sweden
Tel. +46 431-732 00, Fax +46 431-730 95



HEAD OFFICE / VISITING ADDRESS

Fraktgatan 1, SE-262 73 Ängelholm, Sweden



OFFICE/CUSTOMER SUPPORT

Tel. +46 431-732 00, Fax +46 431-730 95
info@bastadgruppen.com



monitorbrand.com

WE ARE
MONITOR

DISTRIBUTORS:

BÅSTAD GRUPPEN AB

BOX 1031, SE-262 21 ÄNGELHOLM, SWEDEN

TEL. +46 431-732 00 **FAX** +46 431- 730 95

info@bastadgruppen.com , www.bastadgruppen.com